

2.2.1 The institution assesses the learning levels of the students, after admission and organises special programs for advanced learners and slow learners.

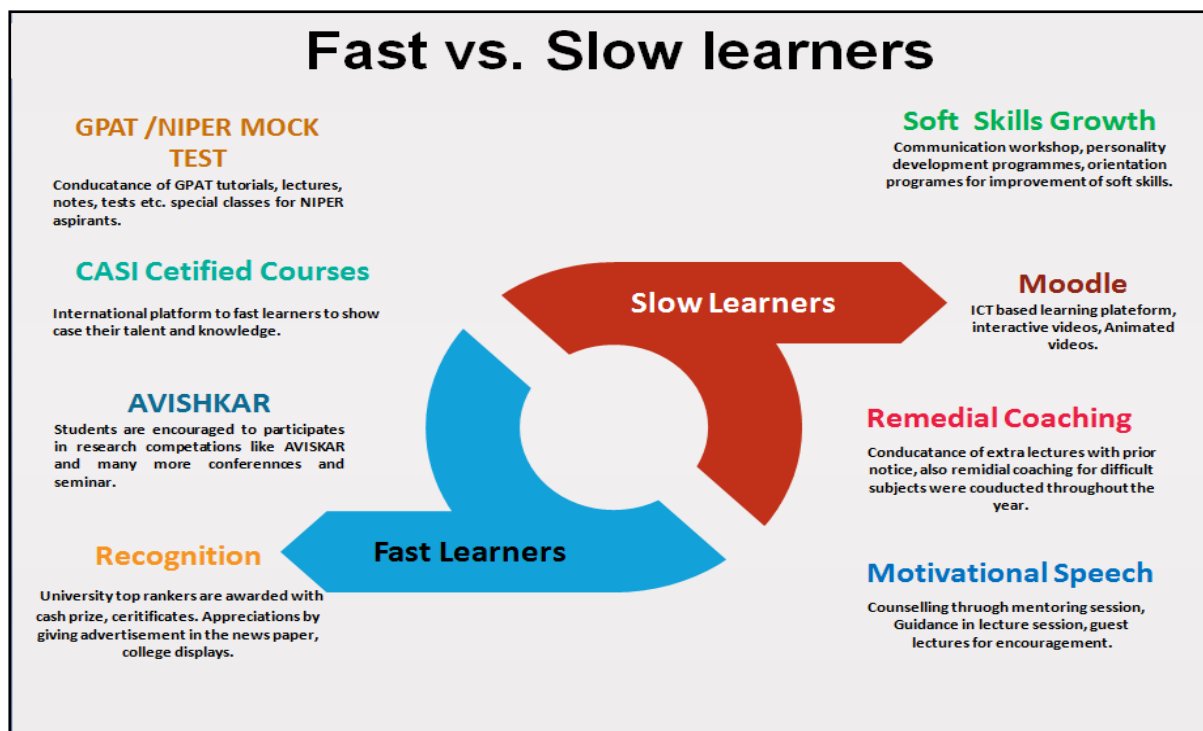
Response:

The institute assesses the learning ability of newly admitted students based on their result of previous examination, CET, NEET etc. The assessment of the learning ability of the student at earliest in the course is of great importance for the students because fast learners will get more opportunities to explore the knowledge also to improve their skill. Whereas, slow learner will be given assignment, instructions and most importantly support to improve their performance. The slow learners are also evaluated for language pattern, social behaviour, difficulty in learning, poor memory etc. The students are assessed through question answer session in the regular theory class, the performance in the class test, viva-voce in the practical, comparing the performance in the other subjects. The institute organizes orientation programmes, communication workshop, personality development programmes for improvement of the soft skill of the students.

Measurable criteria for classifying Slow Learner

Sr. No.	Criteria	Measurable Parameters	
		Slow learners	Fast learners
1.	CET Examination marks	>50	<50
2.	Performance in the class test and sessional examinations	>50 %	<50%
3.	Performance in the practical's and viva voce (5 marks each).	> 2	< 2
4.	*Personal attributes (language pattern, social behaviour, difficulty in learning, poor memory)	> 2	< 2

*Personal attributes of students was assessed by their mentor and class teacher on the grade point scale.



Methods used to improve the learning ability of students (Slow learners)

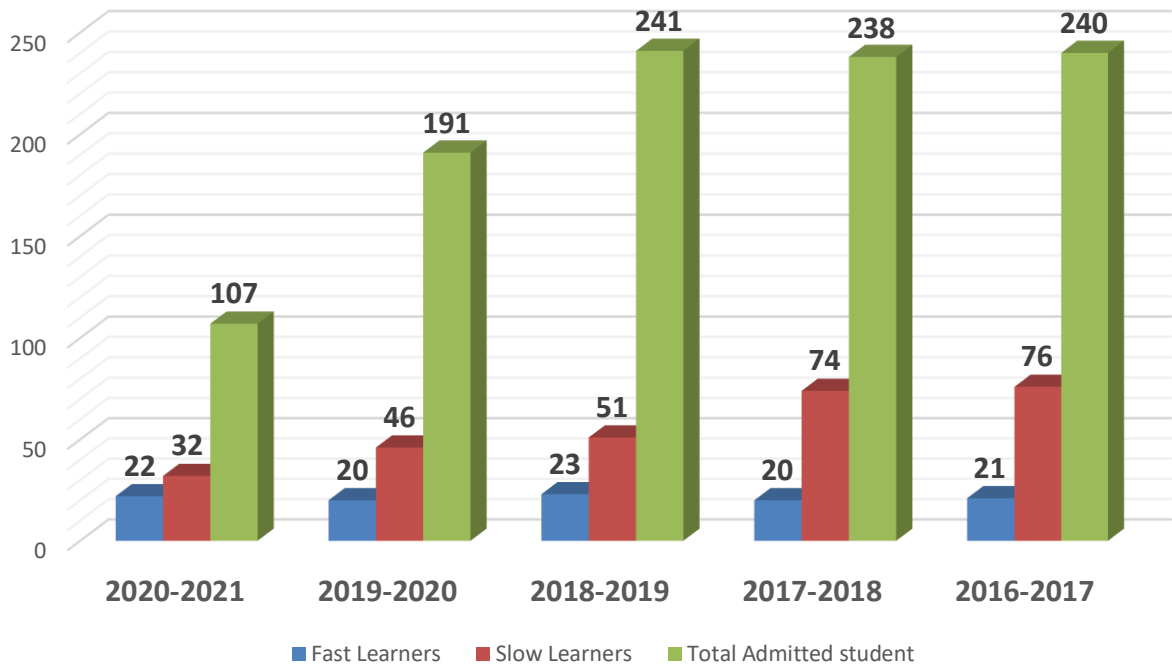
1. Conducance of extra classes for students with prior notice.
2. Providing remedial coaching to difficult subject.
3. Organized and arranged workshop, seminar, and guest lecturers to motive the slow learners.
4. Providing the regular course materials, notes and question banks to the students.
5. Counselling of the student to resolve the difficulties through mentoring session.
6. Arranging communication workshop, personality development programmes and orientation programmes for development of soft skills.
7. Providing ICT based learning model (MOODLE) to increase the interest of the students.


Methods used to explore the learning ability of students (Fast learner)

1. Allowed to participate in the various seminars, conferences and workshop.
2. The university top rankers are awarded with certificates, cash prize also their efforts are appreciated by highlighting their name on the college display and in the newspapers.

3. The book bank facility are provided to the students to have assesses of various standard national and international books.
4. The students are encouraged to participate in the “AVISHKAR” a university level research competition to showcase their research talent and skill.
5. The faculties are appointed to conduct the extra classes for GPAT competitive examination.
6. The guest lecturers of experts in pharmaceutical industries are arranged to share their expertise with the students.
7. ‘Hands on training’ on sophisticated instrument such as HPLC, Dissolution tester, HPTLC, also animal handling skills etc., are provided to the students.
8. The notable alumni of the institute are invited to motivate the students through alumni association.
9. Furnishing new carrier opportunities and guidance for higher studies through training placement cell.
10. The students are inspired for various online courses such as CASI certification courses.
11. Students were enrolled for various module courses under the aegis of Rashtriya Uchhattar Shiksha Abhiyan (RUSA).

Learners Classification Year-Wise




PRINCIPAL
R.C.Patil Instt. of Pharmaceutical
Education & Research
Shirpur, Dist. Dhule 425 405